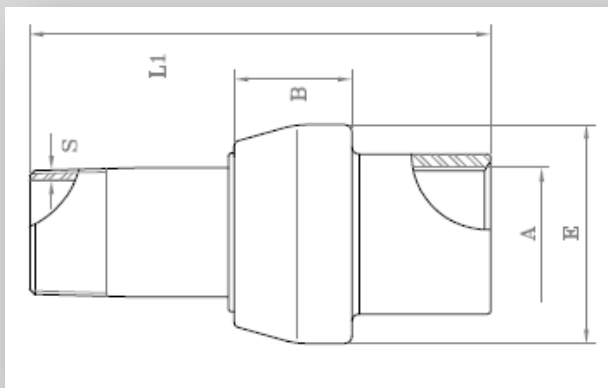


## MONOLITHIC INSULATING JOINTS Class PN10 specification

Working Temperature	Electric insulation	Dielectric resistance	Testing pressure	Working pressure
-10°C+70°C	10 Mohm	3.0 KV	15kg/cm <sup>2</sup>	10kg/cm <sup>2</sup>

### MF-Male Female





- Hot forged socket: ASTM A 105 or equivalent
- Hot forged spigot: API 5L gr.B or equivalent
- Insulating ring in polycarbonate
- Gasket ring in Hytrel 40 D Dupont
- Epoxyphenolic painting
- Threads ends: ISO7/EN10226-1
- Manufactured and tested in accordance to UNI CIG 10284

Product Code	ND	A	E	B	L1	Weight (in Kg)
MF015	1/2"	21.3	46	28	100	0.4
MF020	3/4"	26.7	53	30	110	0.5
MF025	1"	33.4	60	32	120	0.7
MF032	1" 1/4	42.2	71	35	135	1.0
MF040	1" 1/2	48.3	77	37	145	1.2
MF050	2"	60.3	90	38	150	1.7
MF065	2" 1/2	76.1	113	53	170	3.0
MF080	3"	88.9	127	53	200	4.0
MF100	4"	114.3	156	65	200	6.5

NB: The dimensions reported in the table are in millimeters (mM)

Certificates issued: EN 10204 3.1 and CE compliance

 	<b>INSULATION JOINT</b> II 2 GD Zone 1 e 21 d T5 Technical file: A02-MS	
	Technical File : A02-MS	Anno: 2014