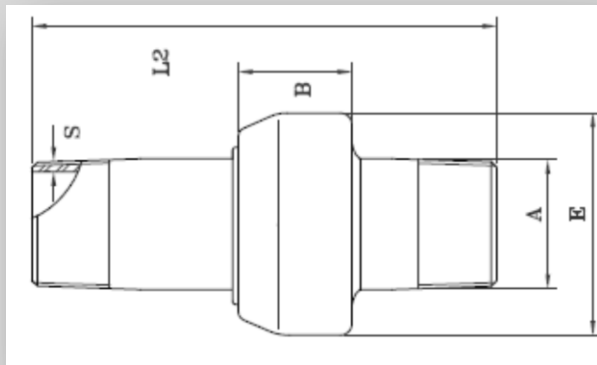


## MONOLITHIC INSULATING JOINTS Class PN10 specification

Working Temperature	Electric insulation	Dielectric resistance	Testing pressure	Working pressure
-10°C+70°C	10 Mohm	3.0 KV	15kg/cm <sup>2</sup>	10kg/cm <sup>2</sup>

### MM-Male Male





- Hot forged socket: ASTM A 105 or equivalent
- Hot forged spigot: API 5L gr.B or equivalent
- Insulating ring in polycarbonate
- Gasket ring in Hytrel 40 D Dupont
- Epoxyphenolic painting
- Thread ends: ISO7/EN10226-1
- Manufactured and tested in accordance to UNI CIG 10284

Product Code	ND	A	E	B	L2	Weight (in Kg)
MM015	1/2"	21.3	46	28	110	0.4
MM020	3/4"	26.7	53	30	125	0.5
MM025	1"	33.4	60	32	137	0.7
MM032	1" 1/4	42.2	71	35	154	1.0
MM040	1" 1/2	48.3	77	37	168	1.2
MM050	2"	60.3	90	38	170	1.7
MM065	2" 1/2	76.1	113	53	194	3.0
MM080	3"	88.9	127	53	232	4.0
MM100	4"	114.3	156	65	260	6.5

NB: The dimensions reported in the table are in millimeters (mM)

Certificates issued: EN 10204 3.1 and CE compliance

 	<b>INSULATION JOINT</b> II 2 GD Zone 1 e 21 d T5 Technical file: A02-MS
	Technical File : A02-MS
Anno: 2014	