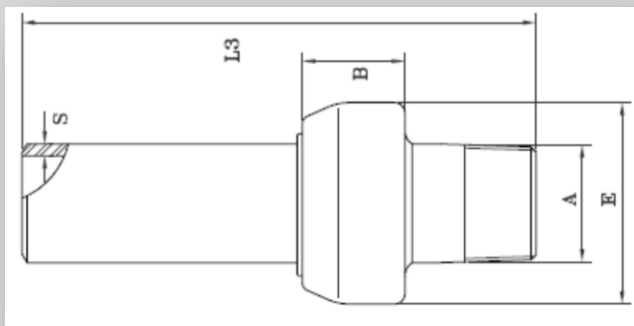


MONOLITHIC INSULATING JOINTS Class PN10 specification

Working Temperature	Electric insulation	Dielectric resistance	Testing pressure	Working pressure
-10°C+70°C	10 Mohm	3.0 KV	15kg/cm ²	10kg/cm ²

MS-Male Welding





- Hot forged socket: ASTM A 105 or equivalent
- Hot forged spigot: API 5L gr.B or equivalent
- Insulating ring in polycarbonate
- Gasket ring in Hytrel 40 D Dupont
- Epoxyphenolic painting
- One end male threaded: ISO7/EN10226-1
- The other end to be welded
- Manufactured and tested in accordance to UNI CIG 10284

NB: The dimensions reported in the table are in millimeters (mm)

Product Code	ND	A	E	B	L3	Weight (in Kg)
MS015	1/2"	21,3	46	28	155	0,45
MS020	3/4"	26,7	53	30	170	0,6
MS025	1"	33,4	60	32	183	0,8
MS032	1" 1/4	42,2	71	35	203	1,3
MS040	1" 1/2	48,3	77	37	215	1,5
MS050	2"	60,3	90	38	225	1,9
MS065	2" 1/2	76,1	113	53	255	3,8
MS080	3"	88,9	127	53	300	5,0
MS100	4"	114,3	156	65	330	7,5

Certificates issued: EN 10204 3.1 and CE compliance

 	INSULATION JOINT II 2 GD Zone 1 e 21 d T5 Technical file: A02-MS
	Technical File : A02-MS
Anno: 2014	