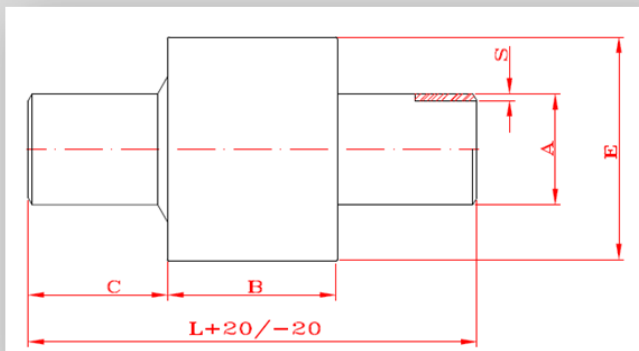


INSULATING JOINTS PN25 SUITABLE FOR HOT WATER

Design temperature	Electric resistance in air	Dielectric test a.c.	Dielectric strenght a.c.	Design pressure	Test pressure
-10°C+140°C	≥100 Mohm	3.5 KV	>10 KV	25 bar	38 bar





- Pup Ends: Steel API 5L/EN 10208-2 or equivalent
- Central Body: Steel ASTM A 105-E355 or equivalent
- Pup Ends to be welded: Steel API 5L/EN 10208-2- Bevels= 30° +5/-0

NB: The dimensions reported in the table are in millimeters (mm)

Product code	ND**	A	S	E	B	C	L	Weight (in Kg)
P020HT	3/4"	26,7	3,91	65	60	95	250	1,5
P025HT	1"	33,4	3,38	68	64	93	250	1,7
P032HT	1" 1/4	42,2	3,56	82	70	115	300	2,6
P040HT	1" 1/2	48,3	3,68	94	74	113	300	3,5
P050HT	2"	60,3	3,91	95	50	125	300	2,8
P065HT	2" 1/2	76,1	5,00	114	52	139	330	4,5
P080HT	3"	88,9	5,00	127	56	172	400	5
P100HT	4"	114,3	5,00	153	64	168	400	8
P125HT	5"	141,3	4,78	192	74	213	500	14
P150HT	6"	168,3	5,60	219	80	210	500	18
P200HT	8"	219,1	6,35	273	90	205	500	28
P250HT	10"	273,0	6,35	329	132	284	700	50
P300HT	12"	323,9	6,35	378	138	281	700	60

** ND > 12" available on request

Certificates issued: EN 10204 3.1 and CE compliance

 	INSULATION JOINT II 2 GD Zone 1 e 21 d T5 Technical file: A02-MS	
	Technical File : A02-MS	Anno: 2014